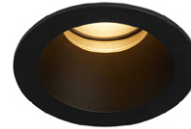
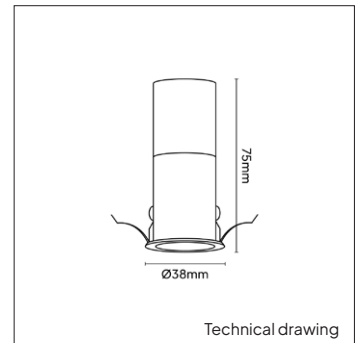
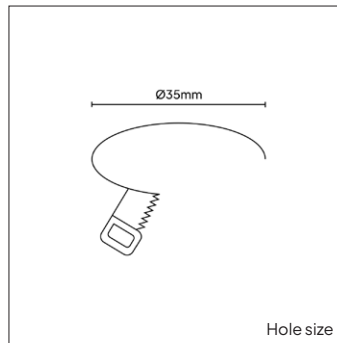


PRODUCT MATERIAL	Aluminium + PC
LIGHT SOURCE	Cree
MODULE LIFETIME	Approx. 50.000 hours
DRIVER	Excluding driver, SELECT OPTION
COLORS (Δ)	<p>○ 3 = RAL 9003 white</p> <p>● 5 = RAL 9005 black</p> <p>● 7 = Dark brass</p> <p>● 1 = Dark bronze</p>
BEAM ANGLE	24°
ADJUSTABLE	No
SIZE	Ø38 X 75mm



OPTIONS

OPTIONAL BEAM ANGLE 2700K	15°	Art. no.: 4283.000.15.0
	36°	Art. no.: 4283.000.36.0
OPTIONAL BEAM ANGLE DTW	36°	Art. no.: 4283.000.36.1
HONEYCOMB		Art. no.: 4283.040.00.0
DIFFUSER	Frosted	Art. no.: 4283.933.96.0
GLASS	Prismatic	Art. no.: 4283.933.90.0
DRIVER OPTIONS 48V	On/off	48V 350mA 1-12W Art. no.: 0112.350.80.0 Must be combined with a central 48V driver
	DALI	48V 350mA 1-14W Art. no.: 0114.350.90.0 Must be combined with a central 48V driver
DRIVER OPTIONS 350mA	Phase cut	350mA 5-9W Art. no.: 0110.350.20.5 This driver can only be placed externally
	DALI	350mA 1-10W Art. no.: 0110.350.40.1 This driver can only be placed externally
POWER CABLE OPTIONS Connected to driver/fixture	Europlug 2000mm 2 X 0,75 Art. no.: 0502.075.20.0	
	Wieland GST 18/3 male 2000mm 3 X 0,75 Art. no.: 0501.183.20.0	
	Wieland T connector GST 18/3 200mm 3 X 0,75 Art. no.: 0500.183.20.0	



DIFFUSER



Frosted

GLASS



Prismatic

HONEYCOMB



Honeycomb

INFORMATION

Always select a driver option and add the selected driver to your order.



Full warranty only applies when fixture is purchased in combination with recommended driver.

ARTICLE NUMBER	BRAND	LUMINOUS FLUX	OUTPUT POWER	MODULE EFFICIENCY	COLOR TEMPERATURE	CRI	TC LIFETIME	mA
4283.350.24.Δ	Cree	211lm	6W	35lm/W	2700K	>90	50.000 Hrs	350mA
4283.125.24.Δ	Cree	261lm	8W	33lm/W	1800-2700K	DTW >90	50.000 Hrs	350mA

Δ See colors