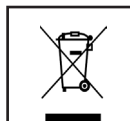


MODEL: MAGIC SNAKE

ITEM NO: 0340.Δ



CE RoHS IP65

1 Precautions before installation

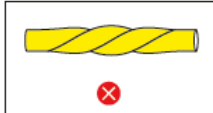
① Recommended for indoor use



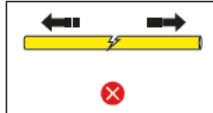
② No pedaling



③ No distortion



④ No Stretching

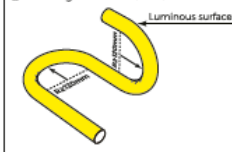


2 Silicone Neon Strip Bending Radius & Note



360° bending

① Bending Direction & Min. radius

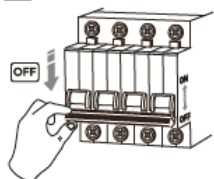


② The bending radius shall be no less than 120mm



3 Wiring Diagram

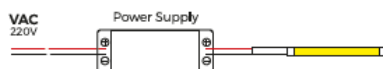
Turn off the power before wiring !



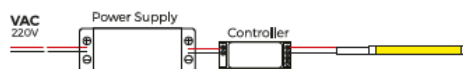
! Notes

- These products are subject to thermal expansion due to temperature changes. Thermal expansion must be taken into consideration for installation in environment with wide temperature change.
- Use water and methylated alcohol to clean the surface.
- The product reaches IP65 protection. Please use wiring system with a protection level equal to or higher than IP65.
- The product is not suitable for swimming pools and fountains.

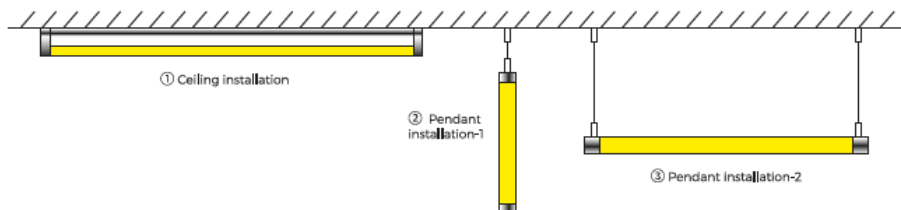
① Non-dimming connection mode



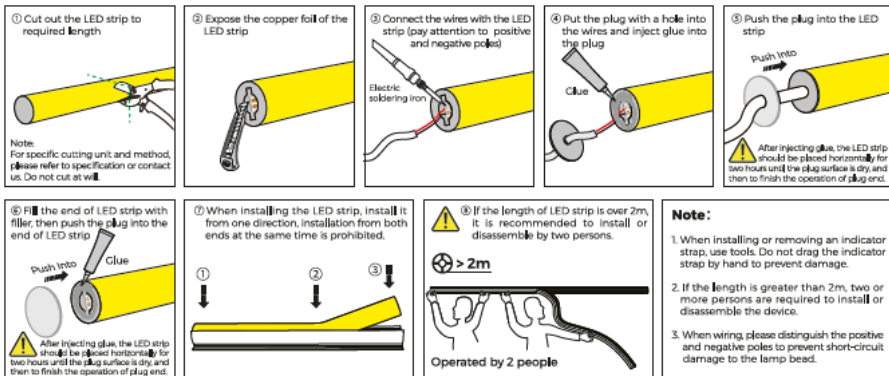
② Dimming connection mode



4 Installation



5 Operations of LED strip cutting, welding and plug installing



6 Precautions and product warranty notes

Precautions:

- Cut as per cutting line marks for required length of neon strips.
- Use 24VDC isolated power supply of less than 5% ripple waves to drive neon strips and do not use RC buck or non-isolated power supply.
- When connecting neon strips in series, light-up test should be made soon after each connection to promptly find out whether the positive and negative poles are correctly connected.
- Pay attention to positive and negative poles connection. Make sure the power supply conforms to required voltage to avoid damage.
- Silicone neon strips shall be stored in a dry and sealed environment for no more than 1 year at best. Working temperature: 20°C ~ +45°C; storage temperature: 0°C ~ +60°C (for digital series, working temperature: 20°C ~ +40°C; storage temperature: 0°C ~ +60°C).
- Neon strips have unilateral conductivity. If a power cable with a DC/AC converter is used, power-on tests shall be done first after connecting power supply to ensure that the positive and negative poles are connected correctly.
- In actual applications, 20% of the power supply shall be kept (recommended to use no more than 80% of the power) to guarantee that sufficient voltage is available to drive the product.
- Attention shall be paid to safe operation. After powering on, it is not allowed to touch the AC power supply to avoid an electric shock.
- To ensure the duration and reliability of neon strips, be sure to bend it in the specified direction and radius range. For details, please refer to the indicating marks.
- Please confirm before usage since products of varied sizes may show slight differences in their color under same color temperature due to their structural differences.