

## MODEL: METEOR R

ITEM NO. 5143.Δ / 5142.Δ



RoHS

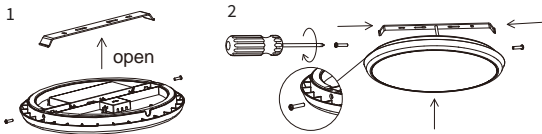
IP54

### IMPORTANT NOTICE

1. To prevent electric shock, turn off electricity at fuse box before installing the lighting fixture, adding or changing accessory.
2. Ensure a distance of 75mm away from the lighting fixture for air ventilation and make sure to obey all fire regulations.
3. The distance between the lighting fixture and to be lighted up object must be at least 500mm.
4. Do not touch the lighting fixture when in use.
5. Do not cover the lighting fixture by any material at any time.
6. When installing or using this lighting fixture, basic safety precautions should always be followed.
7. Please refer to a qualified engineer if you have any questions by installation.
8. According to the EU Directive WEEE (Waste Electrical and Electronic Equipment) the luminaire must not disposed of via insorted waste. It must be sent to the respective local facility for disposal and/or the recycling of electronic products.

### INSTRUCTIONS FOR USE

1. Take out the fixture and accessory pack from box
2. Remove screw, take out bracket. (fig. 1.)
3. Fix bracket with screws into the ceiling.
4. Mount ceiling fixture into the right place. (fig. 2)
5. Installation completed, turn on the power supply.



### DAYLIGHT & MICROWAVE SENSOR

1. Detection area: 140 degree wide detective beam angle with 5-7 meters distance.
2. With sufficient natural light, when illuminance is more than the setting lux, the light does not switch on when presence detected.
3. With insufficient natural light:  
When illuminance is less than the setting lux, the light switches on automatically when presence detected.  
When presence detected, light will never switch off, even the natural light is sufficient.  
After presence left, any movement detected within time-delay, the light will continuously work for another hold time, then switch off automatically until next movement detected.

### SENSOR SETTING

Detection Area	
1	2
● ●	25%
●	50%
●	75%
	100%

Hold Time	
3	4
● ●	10Min
●	3Min
●	60S
	20S

Daylight Sensor	
5	6
● ●	5Lux
●	10Lux
●	50Lux
	Disable

#### Detection area:

Detection area can be reduced by selecting the combination on the DIPswitches to fit precisely each application.

#### Hold time:

Refers to the time period the lamp remains at 100% illumination after nomotion detected.

#### Daylight sensor:

The sensor can be set to only allow the lamp to illuminate below a defined ambient brightness threshold. When set to Disable mode, the daylight sensor will switch on the lamp when motion is detected regardless of ambient light level. 50lux: twilight operation, 10lux, 5lux: darkness operation only.