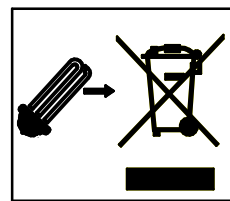
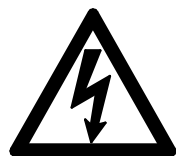
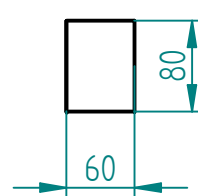


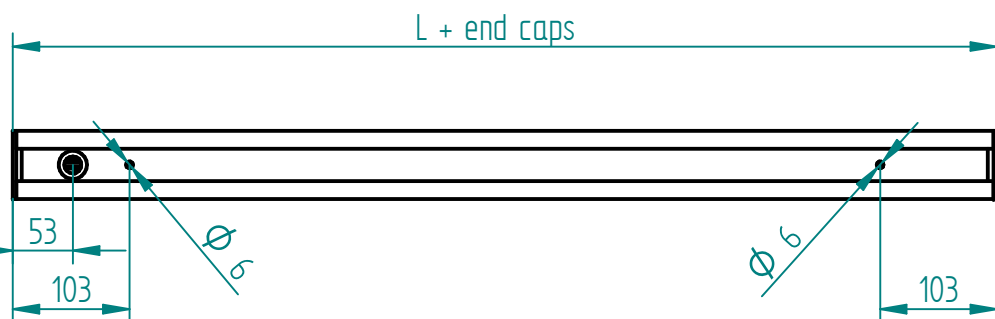
## Profile 600 sr



- PL Wyłączyć zasilanie przed wymianą lampy.
- EN Disconnect the unit before changing the lamp.
- F Debrancher l'appareil avant de changer la lampe.
- D Von den Auswechseln der lampe die Leuchte von der Netzspannung trennen.



L
3Ft = 932
4Ft = 1213
5Ft = 1494
6Ft = 1775
7Ft = 2056



L + end caps
3Ft = 938
4Ft = 1219
5Ft = 1500
6Ft = 1781
7Ft = 2062

**1**

- 1 - Pull the end cap
- 2 - Remove diffuser
- 3 - Open the locks and remove LED insert
  - 3a - Disconnect the grounding wire from LED insert
  - 3b - Disconnect the sensor

# KEYLIGHT

**2**

- 1 - Fix the profile to the ceiling
- 2 - Connect power cable according to the diagram
- 3 - Connect the grounding wire to the LED insert
- 4 - Connect the sensor's quickconnector

**3** Attention: Because of electrostatic effect diffuser may take small dirt and dust. Clean diffusers with soft cloth f.ex. microfibr from dirt or dust direct before final assembly.

- 1 - Put the LED Insert into the profile and close the locks
- 2 - Push the diffuser into the profile - one click
- 3 - Insert the end cap

**4**